

## St. Luke's Visitor

*But the plans of the Lord stand firm forever,  
the purposes of his heart through all generations. Psalm 33:11*

### From The Pastor's Pen

*<sup>14</sup> And the Word became flesh and dwelt among us,  
and we have seen his glory,  
glory as of the only Son from the Father,  
full of grace and truth. – John 1:14*

Christmas isn't just about celebrating the birth of the Son of God. That child would eventually grow up to die on a cross for our sins and rise from the dead. We celebrate both *who* He is and *what* He did and does for us.

I hope your Christmas celebration was joyous. But be aware, from a church calendar point of view, Christmas is not just a day, but a whole season. It goes from Christmas Day through January 5. Then, on January 6, we celebrate the coming of the Wise Men. This is known as Epiphany. And just like the Christmas, Epiphany is both a day *and* a season. The Epiphany season ends the day before Ash Wednesday. The first Sunday in Epiphany begins with Baptism of our Lord and ends with the Transfiguration of our Lord. On both of these occasions, the Father speaks from heaven, declaring that He is pleased with His Son.

**January 7** is a special day for us in that we will be installing our new Director of Christian Education (DCE), William Prann. Please be aware that we will have **only 1 worship service** that weekend. It will be on Sunday at **10:00 a.m.** Mr. Jim Bradshaw from the District Office will also be with us. After the worship service, we will transform the big room into a meal area and have a potluck.

William Prann and his wife Tricia are coming to us from Phoenix, Arizona. William will be starting January 2 or 3, but his wife, who will be with us for the installation, will return to Phoenix and remain there until they are able to sell their house. William's job description focuses on the areas of **Preschool, Children's Ministry** (which includes Sunday School, B.A.S.I.C. Training, and VBS), **Youth**, and **Campus Ministry**.

The weekend of January 20 & 21 is also a special weekend in the life of the church. It is known as **Sanctity of Human Life**. On that day, we will remember that all life is created and valued by God.

We are boldly and unapologetically pro-life. Our church, being a member of The Lutheran Church—Missouri Synod, believes that abortion is contrary to God's Word and "is not a moral option, except as a tragically unavoidable byproduct of medical procedures necessary to prevent the death of another human being, viz., the mother" (1979 Res. 3-02A).

This is a controversial topic in our society. Not many people enjoy controversy, but we are also aware that if we are not permitted to state what we believe, people will not know what we believe. With this in mind, I want to share with you over the next couple of months how you might respond to pro-abortion arguments.

When someone says “My Body, My Choice,” we could respond:

We agree that a person has autonomy over their own body, but abortion isn’t about a woman’s body; it’s about the baby’s body. A woman’s body is not being aborted; it is merely the “setting” for the abortion of the baby’s body. The baby has their own unique body, DNA, unrepeatable genetic makeup, heartbeat, and organs. As the old adage goes, “My right to swing my fist ends where your nose begins.” Your right to do what you choose with your body ends where the body of your child begins. There are plenty of laws in place that restrict a person’s bodily autonomy: you must wear seatbelts in a car, we can’t consume alcohol in certain locations, we can’t stand up as our plane is taking off. If you were to use “My Body, My Choice” to justify breaking those laws, you wouldn’t be taken seriously. No matter how small it is, the baby’s body is not the same as the mother’s body. We don’t consider pregnant women to have 20 fingers and toes, 2 hearts, and 2 brains. Bodily autonomy does not give a person the right to take away someone else’s right to life.

-----  
**Pastor’s Bible Study** is on Sundays at 9:45 a.m. Our topic: **Christians in a Woke World**. It is a Bible Study book written by Rev. Paul Dare and has 16 lessons. In this study, we are examining Cultural Marxism from a Biblical perspective.



-----  
**Theology on Tap** – We will meet on **Tuesday, January 16 at 7:30 p.m.** at **Rockin K’s** (1880 Kimball Ave., Unit 100, Manhattan, KS 66502). The presenter (via zoom) will be **Rev. Dr. Adam Filipek**, pastor at Holy Cross Lutheran Church and Immanuel Lutheran Church in Lidgerwood, ND. He is also the author of **Life in Christ: Rooted, Woven, Grafted into God’s Story** (published by Concordia Publishing House).



Please don’t miss opportunities to pass *the faith* on to your children and grandchildren.

- **BASIC Training** is on **Wednesdays, 6:00-7:15 p.m.**
- **Sunday School** is on **Sundays, 9:45-10:45 a.m.**

-----  
Our **American Heritage Girls** and **Trail Life USA** Troops continue to be strong. We have about 25 boys and girls in each group. These troops are not just sponsored by the church. We own and operate them. They are a ministry of our church. We put our “denominational flavor” on them. The girls meet on the 1<sup>st</sup> and 3<sup>rd</sup> Mondays of the month, and the boys meet on the 2<sup>nd</sup> and 4<sup>th</sup> Mondays of the month. Both groups have leadership positions available. If you are able to serve, please speak with me (pastor). We will work to get you grafted into these ministries.



-----  
If you can’t join us in worship in *person*, please join us via YouTube.

-----  
Thank you so much for remembering me and my family this Christmas. The generous gifts and goodies are truly a blessing. Thank you!

-----  
It is an honor to serve as your pastor.





Date	Saturday 6:00 PM	Sunday 8:30 AM	Sunday 11:00 AM
January 6/7		Taryn Thiele	Tucker Lynch
January 13/14	Annalise Orona	Tessa Thiele	Sarah Oelke
January 20/21		Gavin Hudson	Allie Winter
January 27/28		Carter Manning	Hunter Fong



**Children's Ministry Chair:** Tiffany Manning  
**BASIC Sub-chair:**  
**Sunday School Sub-chair:** Marilyn Fick  
**Children's Care Sub-chair:** Darci Paull  
**Family Events Sub-chair:** Sarah Larson  
**VBS Sub-chair:**

- January 3rd - No BASIC
- January 7th - No Sunday School
- Sunday School - Sundays @ 9:45 a.m.
- BASIC - Wednesdays @ 6:00 p.m.
- Emergency Shelter Donations - January is Laundry Soap



**Youth Night Leader:** Natalie Winter  
**Servant Events Sub-chair:** Scott Stone  
**Youth Events Sub-chair:**  
**Gathering Sub-chair:** Becky McQuillian

- January 3rd - Sr High @ Little Apple Lanes from 6:00 p.m. - 8:00 p.m.
- Sr High Youth - Meets Wednesday nights @ 6:00 p.m. at the Blue House

### CONNECT GROUPS

**Sunday Adult Bible Class,** Pastor Schmidt

**Lutheran Layman's League,** David & Julie Hatesohl, 785-845-8124 or 785-236-0493 or phoebehat@gmail.com.

**Table Talk,** Sundays at Noon during the school year. Meal for college students here at the church

**Women's Bible Study,** 2nd & 4th Mondays of the month, Diane Mosier, sdmosier\_2000@yahoo.com

**Card Making,** Janet Beach and Ann Williams

**Campus Ministry Bible Study,** Mondays @ 9:00 PM, during the school year; meets at the Blue House

**Men's Bible Breakfast,** 7:00 AM Tuesdays, Vista Drive In, Walt Fick, 785-776-0879 or fick.walter@att.net

**Mission of Love** (working on quilts), 2nd Tuesday of the month, 9:00 AM, Dorothy Burtness, 785-341-5530.

**Cancer Companions**, Jamie Spikes, 785-313-1587; Judy Boye, 785-320-6355

**Theology on Tap**, 3rd Tuesday of the month, 7:30 PM, Rockin K's, 1880 Kimball Avenue, Manhattan

**Campus Ministry Vespers**, Thursdays @ 8:00 PM, during the school year; Meets at the Blue House

### **TRAIL LIFE USA AND AMERICAN HERITAGE GIRLS**

St. Luke's owns and operates **KS0057 Troop**, Trail Life and American Heritage Girls. **These groups meet during the school year.** For TLUSA, boys Kindergarten through 5th grade meet on the 2nd & 4th Mondays of the month from 6:00 PM - 7:15 PM. Boys 6th grade through 12th grade meet every Monday of the month from 7:00 PM - 8:00 PM.

AHG meet the 1st & 3rd Mondays of the month from 6:00 PM - 8:00 PM.

---

### **CHRISTIAN CARE CORNER - LUTHERAN EARLY RESPONSE TEAM (LERT)**

Responding to a disaster is a vital part of who we are as members of The Lutheran Church—Missouri Synod. Responding to a disaster allows a congregation to confess Christ to their community, region and world in ways they may have never before considered.

The Lutheran Early Response Team (LERT) is there to help people in need during a disaster. The team functions after the First Responders and are there to offer support and love to individuals and families as they rebuild.

Several years ago, St. Luke's hosted a LERT training session. There are opportunities to learn and serve with LERT. There are several resources available on the Lutheran Church Missouri Synod website at: <https://www.lcms.org/how-we-serve/mercy/disaster-response/resources>.

What can we do? To start, **St. Luke's is coordinating events for April 2024.** LERT is hosting an event – **Faith at Work** – to encourage and promote activities to prepare us for an actual disaster. Planning for the **St. Luke's Faith at Work will begin in January 2024.** If you are interested in participating in the planning for Faith at Work 2024, please **contact the Christian Care Chair – Julie Hatesohl at [phoebehat@gmail.com](mailto:phoebehat@gmail.com) or 785.236.0493.** Be sure to watch the weekly bulletins for details of the events that will be happening in April 2024!!

---

### **LUTHERAN LAYMAN'S LEAGUE**

St. Luke's LLL Fellowship Club will meet **January 7th at 7p. m.** at the home of Joyce and Gary Mott - 1526 Westwind. If you have questions call 537-0907.

---

### **A CREED FOR EVERONE**

- \* SILENCE when your words would hurt
- \* PATIENCE when your neighbor's curt
- \* DEAFNESS when the scandal flows
- \* THOUGHTFULNESS for other's woes
- \* PROMPTNESS when stern duty calls
- \* COURAGE when misfortune falls



**January 3:** Scott Olesky  
**January 4:** Klaus Hagenmaier  
**January 5:** Ed Klimek  
**January 8:** Ron Frey, Erik Ukena  
**January 12:** Marlene Kunze-Dolan, Lilly Wyatt  
**January 13:** Jeb Woodford, Peter Lyons, Rylan Hudson, Anna Walsh  
**January 14:** Connie Kasten  
**January 17:** Sylvia Carter  
**January 19:** Vince Redding, Kris Burnett, David Garcia  
**January 20:** Kay Mathies  
**January 21:** Liz Beikmann, Tonja Wright  
**January 22:** Madison Simonds  
**January 23:** Shanna Dieball  
**January 26:** Wanda House, Donna Feld  
**January 27:** Ian Hartsook, Jean Olson  
**January 28:** Rachel Beach, Brooklyn Lohse  
**January 29:** Theodore Hartsook  
**January 30:** Ben Zier  
**January 31:** Scott Winter

**January 10:** Bruce & Pat Oberhelman  
**January 20:** Jeff & LeAnn Sturdy



### DCE INSTALLATION

William Prann will be installed as St. Luke's new DCE on **January 7<sup>th</sup> at 10:00 a.m.** This will be the **only service of the weekend** and there will be **NO Sunday School**. A church potluck meal will follow **at Noon**. Meat, potatoes, and vegetables will be provided. Please use the sign-up sheet located on the table in the church entryway so we may have an idea of how many will be attending the meal. **Bring**

**12-15 servings of your favorite family salad or dessert to share.** For more information or questions, contact Shane Rengstorf, 785-556-1277



### ***The Chief Stewards of Humanity: Mom and Dad***

St. Paul tells the Ephesians that the first commandment with a specific promise attached to it is, “Honor your father and mother so that it may go well with you, and you may live long in the land” (Eph. 6:2). This promise is one indication of the importance of this commandment. The other thing that highlights the special nature of this commandment is its placement within the Ten Commandments.

The Ten Commandments are clearly organized in two big categories. The first three commandments deal with our relationship with God. This category is called the First Table of the Law. The last seven commandments, the Second Table of the Law, tell us how we should relate to other people. These two tables correspond to what Jesus calls the two greatest commandments: “You shall love the Lord your God with all your heart and with all your soul and with all your mind,” and “You shall love your neighbor as yourself” (Matt. 22:37–39).

The order of the Second Table of the Law is also important. Murder is a greater sin than adultery, which is a greater sin than stealing, or lying, or coveting. But why is the Fourth Commandment first in the Second Table, ahead of “you shall not murder”? Is disobeying your parents really worse than murder? Or maybe we should give up on thinking these commandments are ordered?

The overall effect of this order is to get us to see our parents as a connection point between our neighbors and our God. Throughout our upbringing our father and mother stand between us and God and deliver His gifts to us: God clothes us, feeds us, protects us and teaches His Word to us through our parents.

So, parents have a very high calling from God. They are called to be stewards of the greatest gift: the gift of life.

Parenting thus gives us a keen insight into all our stewardship. Parents know that they have been given a great treasure in their children, a treasure that does not belong to them, yet for which they feel a great deal of responsibility. Truth be told, every gift we have been given is like this, because everything we have — whether our own personal skills and powers or our wealth and time — is all from God. He entrusts it all to us so that we can use it all and take care of it all for His great purposes.

– LCMS Stewardship Ministry: [lcms.org/stewardship](https://lcms.org/stewardship)

---



Church Ice Skating Party Saturday, January 20th, 7:30 p.m. at The Ice Skating Rink in Cico Park,  
Manhattan, KS



### LCMS-U

Are you a college student? Come join fellow college students for Bible study. LCMSU has **Bible study on Monday nights from 8:00 - 10:00 p.m.** at the Blue House, 9354 N Delaware. Every Sunday, **Table Talk (free lunch) is at noon at St. Luke's.** The first Sunday of the month, Table Talk is hosted by Christ Lutheran, 4592 Green Valley Road, Manhattan, KS 66502. **Our first Table Talk of the Spring Semester will be on Sunday, January 21st, 2024 at St. Luke's. Our first Bible study of the Spring Semester will be on Monday, January 22nd, 2024.** Looking further into the semester, we will have a **Spring Retreat.** The dates are set for **April 19th-21st.** We will be going to Lutheran Valley Retreat (LVR) in Colorado. Contact Megan Jones (meganjonesvc@ksu.edu or 316-253-5808) if you have any questions or would like to register.

---



Lutherans  
For Life

### FLINT HILLS LUTHERANS FOR LIFE KANSAS DISTRICT LCMS LIFE CONFERENCE

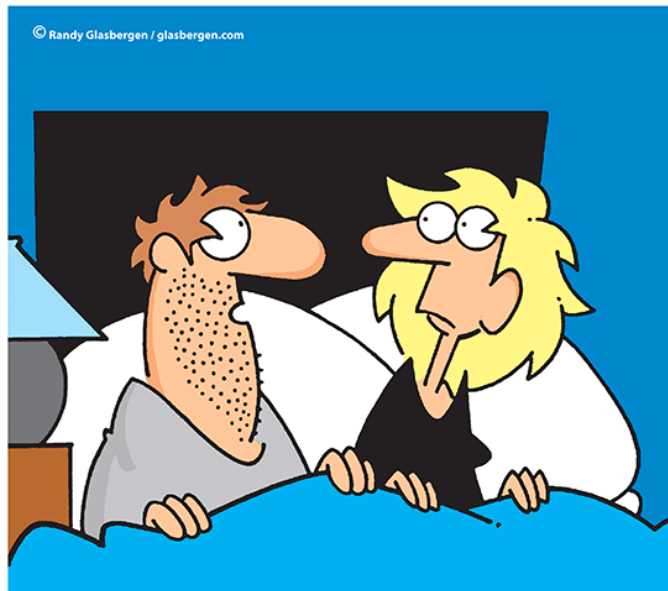
If you've never been before, make this year the first! **Wednesday, January 24, 2024** at **John's Ev Lutheran Church, Topeka.** Check-in and Registration is from 8:00 – 8:30 am. There will be two presentations by Rev. Dr. Matthew Durance. If you would like a box lunch you can sign up for it. For more information and to sign up visit:

<https://kslcms.org/caring-ministry/life-ministry/2024-life-conference/>

Or just go to the Kansas District LCMS website and you will find the Life Conference.

At 11:40 am those who want to attend **the Rally for Life on the steps of the State Capitol** either walk or drive and meet at the Topeka Performing Arts Center. The march begins there. The events will conclude about 1:30 p.m. ??? Interested but don't want to drive – let's see if we can carpool!! **Contact Larry or Judy Boye 785-320-6355**

---



**"I don't wake up at night to check my e-mail.  
I automatically have it forwarded to the  
people in my dreams and they read it to me."**

***Here is a way you can support St. Luke's and qualify for a tax break at the same time."***

### **What is a Qualified Charitable Contribution (QCD)?**

A QCD is a withdrawal from a traditional IRA which goes directly to a qualified charity. If done correctly this withdrawal and contribution does not add to Federal or State Taxable Income or Adjusted Gross Income. You do not have to itemize on taxes to take advantage of this giving opportunity.

The basic requirements are:

- 1) The withdrawal must be from a Traditional Individual Retirement Account (IRA). (If you have a 401K or 403 B funds can be rolled to a traditional IRA first to make this work.)
- 2) The IRA owner must be at least 70.5 years old.
- 3) The money must go directly to a qualified charity. St. Luke's is qualified. The recommended approach is to have the check made out to St. Luke's Lutheran Church and have it mailed to you and you deliver. Make a copy of the check and deliver to St. Luke's so you know all was done correctly.
- 4) When reporting taxes, the withdrawal is reported and if the QCD options are appropriately load and calculated on your tax forms this withdrawal will not be a taxable event..
- 5) If you are of the age of Required Minimum Distributions (RMD) the QCD can count towards your RMD requirements. (The RMD age is changing from 70.5 top 72 years of age depending on your age.)
- 6) The maximum qualified QCD is \$100,000 per year per individual. IRA's are individually owned. So if each spouse has their own IRA, each can do a QCD.

If you have any question visit with Brad Brunkow, Karen Armbrust, and involve your financial firm.

-----







# January

## TRAVELING BULLETIN

Faith Luther Church, Branson, MO  
Kevin & Joyce Jones

Ascension Lutheran Church, Wichita, KS  
Tom & Pat Orazem

Christ Lutheran Church, Wichita, KS  
Duane & Jeanette Campbell

(When you worship at another church, please bring the worship folder and bulletin to the church office with your name on. We will post your name and where you've worshipped, hopefully stimulating conversation of where you've visited. And, our staff will get the chance to see what other churches are doing. Thanks!)