

St. Luke's Visitor

*But the plans of the Lord stand firm forever,
the purposes of his heart through all generations. Psalm 33:11*

From The Pastor's Pen

At just the right time, "...God sent forth his Son, born of woman, born under the law, ⁵to redeem those who were under the law, so that we might receive adoption as sons." (Galatians 4:4-5)

At just the right time, God has guided the St. Luke's relocation process to where it is at today.

GROUNDBREAKING on our new property (4801 Anderson Avenue, Manhattan, KS 66503) will be on **Sunday, October 6**, at **3:30 PM**. Join us for this historic event! Afterwards, we will go to the Campbell farm for our Fall Festival. Please bring a side dish or dessert to share.

This month we celebrate the Reformation. We continue to rejoice in the Gospel! We continue to rejoice in Scripture alone, Grace alone, Faith alone, and Christ alone. Our **Circuit Reformation Service** will be on Sunday, October 27, at 2:00 PM, at St. John Lutheran Church in Alma (218 W 2nd St, Alma, KS 66401).

Interested in membership at St. Luke's? Interested in learning more about what we believe, teach, and confess? Please talk to me (Pastor Schmidt). I am currently leading a class this fall on Sundays from 2:00 to 3:30 PM. I would love to start getting the roster set for the next class that will be offered this winter/spring.

Please join us on **Sunday mornings** at 9:45 AM in the Fellowship Hall. After **refreshments**, we gather for **Bible Study**. We are currently looking at **Exodus**.

If you enjoy snacks on Sunday morning, please consider signing up to be our **snack provider** on a particular Sunday. The sign-up sheet is on the bulletin board next to the kitchen.

If you can serve a meal for our **Campus Ministry Table Talk**, please sign up in the narthex. Our Campus Ministry folks would greatly appreciate your generosity. This meal is served on Sunday evenings at 6:00 PM in the Blue House.

American Heritage Girls (AHG) Troop KS-0057 meets on the 1st and 3rd Mondays of the month, 6:00-7:15 PM, in the Education Building. **Trail Life USA** (TLUSA) Troop KS-0057 meets every Monday in the Fellowship Hall. The younger boys meet from 6:15 to 7:15 PM and the older boys meet from 7:00 to 8:30 PM. New members are always welcome.

Sunday School is on Sundays, 9:45-10:45 AM. **B.A.S.I.C. Training** is on Wednesdays, 6:00-7:15 PM. Let's do what we can to make sure that the next generation is Biblically literate.

It is an honor to serve as your pastor.

“Sharing Jesus Christ’s love with those around us.”



AUGUST OFFICIAL ACTS

Release Member

Beverly Price

Ron Reich

Dale Straub

Baptism

Aarik Macklin Loverude (Erik and Meghan)

August 4, 2019

Jaxon Wayne Ascher (Loren and Sarah)

August 10, 2019

Burials

Jean Kunze Peterson (August 8, 2019)

August 13, 2019—Greenwood Cemetery, Clay Center, KS

Wallace “Wally” G. Jeffrey (August 15, 2019)

August 20, 2019—Sunrise Cemetery, Manhattan, KS

Nancy Havenstein (August 20, 2019)

August 26, 2019—Sunrise Cemetery, Manhattan, KS



Date	Saturday 6:00 pm	Sunday 8:30 AM	Sunday 11:00 am
October 5/6	Ian Carter	Lilly Radke	Riley Lynch
October 12/13	Joseph Feldhausen	Olivia Stuckwisch	Ethan McQuilliam
October 19/20	Lilly Radke	Jonathan Feldhausen	Zoe Riggs
October 26/27	Riley Lynch	William Miesner	Bailey Wright



October 2: Barbara Hackbart, Robert Krause, Pat Roland, Jerry Feeley
October 3: Matthew Feeley
October 6: Rachel Johnson, Calven Zrafczik
October 7: Shanda Wilson, Brent Anders
October 8: Conway Fleming
October 9: David Beach, Chris Day, Cassandra Wyatt, Benjamin Lindsey
October 10: Nancy Williams, Catherine Ukena, Christopher Havenstein
October 11: Jeanette Campbell, Jacinda Tucker, Michael Kring
October 12: Dan Murphy, Andrew Wagner, Rebekah Johnson
October 13: Kayla Dieball, Paul Zidek
October 14: Noni Johnson, Mike Hatesohl
October 15: William Robb, Stella Reinhardt
October 16: Nancy Danner
October 17: Gary Kasten, Ryan Holle, Joe House
October 20: Lavon Smith
October 21: Brandon Klimek, Coleton Prockish

October 23: Wesley Conrow, Hannah Schmidt
October 24: John Miesner, Shane Lohse
October 25: Rod Robison
October 26: Ryan Feeley, Kyle Campbell
October 27: Darleen Moormann
October 28: Liam Gudenkauf
October 29: Terry Wehmueller, Deanne Burris, Jon House, Lucas Parker
October 30: Chari Manry, Caylee Asebedo



October 2: Vince & Sandi Redding, Phil & Amy Vikander
October 3: Tobin & Tricia Olson-Mills
October 4: Ryan & Mary Holle
October 8: Larry & Alice Wesche, Tom & Patricia Orazem
October 9: Brian & Sylvia Carter, Scott Stone & Susan Spain
October 11: Steve & Sharon Eckhoff
October 13: Lowell & Stacy Kohlmeier
October 14: Jared & Shanda Wilson
October 16: Larry & Joan McCoy
October 20: Brandon & Jennifer Fleming

EARLY LEARNING CENTER (ELC)

Teachers and students at St. Luke's ELC are having a great start to the new school year. At the beginning of the month we celebrated our grandparents by hosting a special program. Following the program, everyone enjoyed refreshments in the church basement and the children made a craft with their guests. It was a special day!



Several of our ELC families were also able to join us for the annual Back-to-School-Bash. This was another fun event that brought our students and their families together at St. Luke's.

If you run into a current ELC student, be sure to ask them, "Who made everything?". We have spent the entire month learning about each day and the amazing things God created. Their verse for this month has been, "God saw that all he had made and it was very good." (Genesis 1:3) We are thankful to have the opportunity to instill God's word to memory with our kiddos.



Children's Ministry Chair: Shane Rengstorf, slrengstorf@yahoo.com

BASIC Sub-chair:

Sunday School Sub-chair:

Children's Church/Nursery Sub-chair: Marilyn Fick,
wm_fick@yahoo.com

VBS Sub-chair: Tiffany Manning, tiffanykaymanning@gmail.com

Family Events Sub-chair: Darci Paull, 785-565-4123

- October 2 Family Night 6:00 to 7:15 PM. We will be having a meal for the family, BASIC store and family craft. This will take the place of all regular Wednesday night activities.
 - October 30 Trunk or Treat 6:00 to 8:00 PM.
 - We are in need of a Sunday School Sub-chair and BASIC Sub-chair.
 - We are in need of substitute teachers for Sunday School and BASIC.
-



Youth Ministry Chair: Lori Uffman

Servant Events Sub-chair: Jerry Feeley

Youth Events Sub-chair: Shanda Wilson

Gathering Sub-chair:

- October 2 Family Night 6:00 to 7:15 PM. We will be having a meal for the family, BASIC store and family craft. This will take the place of all regular Wednesday night activities.
 - October 19 Paintball at Fox Hole Paintball in Junction City. Leave church at 9:30 AM; back to church at 12:15 PM. \$20 per person; no lunch provided. RSVP with waiver due October 13.
 - October 27 Regular registration and \$115 due for Senior High Gathering in Wichita, KS November 22 to 24.
 - After October 27 Late registration and \$135 due for Senior High Gathering in Wichita, KS November 22 and 24.
 - We are in need of a Gathering Sub-Chair.
-

MISCELLANEOUS

October Door Offering: LCMS Disaster Relief Fund

The LWML Ladies Nuts and Treats: If you like pecans and other nuts and treats for yourself or gift giving look for the bright yellow order forms. It is time for the Lutheran Women's Missionary League (LWML) nut sales. Proceeds from this fundraising event will purchase the "Portals of Prayer" devotional booklets for use at the hospital and nursing homes in Manhattan. Order forms are available in the narthex or from one of the members listed below. Orders with check attached must be turned by October 1 or November 1 to: Jeanette Campbell (539-6060); Marilyn Fick (776-0879);

Julie Hatesohl (236-0493); Joyce Mott (537-0907); Nancy Williams (383-3340) or Alice Wesche (539-7278).

Family Night: Parents are welcome to join us on Wednesday, October 2, for Family Night from 6:00 to 7:15 PM. We will be having a meal for the family, BASIC store and family craft. Donations needed for store items and to help buy the meal for family night. Families will be making prayer jars to take home. Please mark this on your calendar to share this night with your children. This will take the place of all regular Wednesday night activities.

Mission of Love: We will meet at 9:00 AM on Wednesday, October 9, in the fellowship hall to continue working on quilts. Come and enjoy a morning of fellowship. Questions: Dorothy Burtness, 785-539-8018.

Trunk or Treat: Wednesday, October 30, 6:00 to 8:00 PM. Sign up sheet in the narthex with inside or outside space available. Contact Darci Paull 785-565-4132 or darci.paull@gmail.com.

Funeral Luncheons: Thank you to all who contributed food or helped in any way preparing for and serving funeral luncheons. Funerals are never a planned event and are usually on short notice. We can always use help setting up tables, calling for food donations, and helping serve. We spend a lot of time calling for food donations. If you see a funeral coming up and would be available and willing to help please feel free to call Dorothy at 785-539-8018 or text 341-5530 or call Alice at 785-539-7278 or text 477-1325.

CONNECT GROUPS

Sunday Adult Bible Class, following fellowship time, Exodus, Pastor Schmidt

Women's Bible Study, Mondays, 2nd and 4th Monday, 9:30 AM, "John, The Way to True Life," Diane Mosier, 785-776-8615

Lighthouse, an infertility, miscarriage, and infant loss support group, 3rd Monday of the month, 6:30 PM, education building, Meghan Loverude, meloverude@gmail.com; Charity Smith, dcestlukesmanhattan.org

Card Making, 3rd Monday of the month, 7:00 PM, at Candlewood Frame Shop, Janet Beach and Ann Williams

Men's Bible Breakfast, Tuesdays, 6:30 AM, review sermon notes from Sunday's service, eastside McDonald's, Walt Fick, 785-776-0879 or fick.walter@att.net

Young Adult Group, Tuesdays, 7:30 to 9:00 PM, senior high youth room in education building, Kaitlin Krause, 918-899-6927 or kaitlinjoy.krause@gmail.com

Parents' Night, Parents with any age child are welcome to spend time together in fellowship, discussion and devotions. 1st Tuesday of the month, 6:00 PM, basement fellowship hall, Charity Smith, dcestlukesmanhattan.org, or Rachel Sielaff, Rachel_louree@hotmail.com. Childcare is available at \$10 per child; RSVP required for childcare. Food provided.

Mission of Love (working on quilts), 2nd Wednesday of the month, 9:00 AM, basement fellowship hall, Dorothy Burtness, 539-8018

Cancer Companions, Fridays, 1:30 PM, Via Christi Village Chapel, Jamie Spikes, 785-537-3929; Judy Boye, 785-320-6355

THE LUTHERAN CHURCH—MISSOURI SYNOD
LCMS STEWARDSHIP MINISTRY
NEWSLETTER ARTICLE OCTOBER 2019

In the early morning hours of Feb. 18, 1546, Martin Luther closed his eyes forever. And the hand that hammered the 95 Theses into the door of the Castle Church in Wittenberg on Oct. 31, 1517, penned its final words:

“We are all beggars. This is true.”

And this is the truth that our Lord says makes you free. Ironical, isn't it? That, in order to be free, you must be a beggar; you must be utterly dependent and reliant upon God. This makes us uncomfortable – the way we're uncomfortable when someone gets us a Christmas or birthday present when we haven't gotten them one. We feel we owe them. And we don't much like being in someone's debt.

But what Luther would remind us is that we are all indeed beggars. But we're not just anyone's beggars. We're God's beggars. And this is His legacy to the Christian Church. Christ came for sinners. He came to seek and save the lost. He came to heal the sick and raise the dead. He came for sinners, and He dwells only with sinners.

And, if we are to be where He is, we must be willing to be counted among the lost, the sick, and the dead. We must be willing to be beggars. We must cry out for mercy, for grace, and for his undeserved love and kindness. We must be dependent solely on Him and what He gives.

And here's the beauty: He gives us everything. Everything – forgiveness of sins, salvation from death and the devil, and eternal life. This is not because of any worthiness or merit in us, but it is because of His divine goodness, mercy, and grace.

On account of Christ's death and resurrection, the Father forgives you, saves you, and is pleased with you. And you receive. You receive His love, His righteousness, His holiness, His acceptance, and His inheritance. We are all beggars. This is true.

This is the heart and soul of Christianity and the life-blood of the Christian Church. God justifies us, and He declares us innocent and righteous by His grace received through faith for the sake of Christ. This is not because of our works; this is because of His work on the cross. We, who once were enemies of God, are reconciled to Him and made to be His children.

This is what Luther would point us to when He took up his pen for the last time and scribbled “We are all beggars. This is true.” We are beggars. But we are beggars of the God who does not ignore us, who doesn't pass by us on the other side. We are beggars of the One who descended from heaven to make His dwelling with sinners.

We are beggars of Him who deigns to dwell with us, among us, and – yes – even in us by grace for Christ's sake. For in the bread and cup that we bless, we share together with Christ and each other the riches of God's grace.

So inexhaustible are the riches of this grace – the Gospel in sermon and absolution, in Baptism and Holy Communion – that our cups overflow. We, who are God's beggars, are not only inexhaustibly satisfied but have something to give back in thanksgiving and praise.

ST. LUKE'S LUTHERAN WOMEN IN MISSION MINUTE

Last month, we announced Lutheran Women in Mission (LWML) Mailbox Member Program. This is a free program for those who are unable to make LWML meetings but want to stay connected to events and opportunities to serve. Sign-up sheets are located in the narthex next to the LWML acrylic mite box. Turn in the form to Julie Hatesohl or her church folder. You can also directly email Julie at phoebehat@gmail.com with a subject line: LWML MAILBOX MEMBER to be added to the distribution list.

Did you know LWML has their own app: www.lwml.org/app for women on the go? Download this free app to your smart devices on the App Store or Google Play. Through this app you can get access to 2-minute Tuesday, Bible Studies, Podcasts. If you ever get stuck in a line, this app is a perfect way to pass the time and connect with God.

The Society/Group met September 9. Susan Brunkow was our speaker. She gave us an update from the National LWML Convention that was held in Mobile, AL in June. Mark your calendars for April 17-19, 2020 for the Kansas District Convention in Topeka, KS and June 24-27 for the National Convention in Lexington, KY. Also, if you were not able to go to Mobile, you can follow the livestream available on the LWML website: <http://www.lwml.org/2019-convention>

The Caring Service Committee collected school supplies and during the September 9 meeting we put together 60 school kits. Thank you to everyone who helped us with this mission event.

Nut sales are on-going. Proceeds from these sales go towards purchasing Portals of Prayers for the hospital and area nursing homes. Order deadlines are October 1 and November 1. Order delivery will depend on the weather, as the company will only deliver when the temperatures are cool enough, so the chocolate items do not melt.

The St. Luke's LWML participated in this year's Pumpkin Patch. Thank you to those who provided baked goods and snacks or worked the booth for this event. Proceeds from this event go to Shepherd's Crossing. Oh, and thank you to those who stopped by and purchased items to help our cause!

Upcoming Events:

- September 29 - Blessing of the Quilts
- October 1 - First nut sales order due
- October 12 - Lutheran Work Relief Pick-up
- October 12-13 - LWML Weekend – Celebrating 70 years of St. Luke's LWML
- October ??? - Spooktacular event (details coming – Watch for updates in the “Boo”lletin!)
- November 11 - Society/Group meeting at 7:00 PM at the Church

If you have questions about Lutheran Women in Mission or want to get involved, please contact the Society Officers: Julie Hatesohl, Alice Wesche, Jill Newland, Marilyn Fick, Dorothy Burtness or Liana Eagan, either at Church or contact us through the Church Directory. We'd love to hear from you!

STEWARDSHIP MESSAGE – OCTOBER 2019

One month to go before Consecration Sunday where members will be asked to pledge their gifts for the upcoming calendar year (2020). Throughout October think about areas where you can serve the Church/ELC, the community, the nation or the world.

October is also a good time to reflect on God's blessings to you during 2019 and consider giving back in His glory in 2020.

Take time this month to pray and consider your giving for the upcoming year.

CANCER COMPANIONS

“ more people should be coming since this is such a valuable and helpful program for those with cancer.” This is a quote from one the members of our Cancer Companions Support Group. Our group would welcome you or someone you know who has cancer. We are more than a support group. Our materials guide us to see that God is still in control, not cancer.

FLINT HILLS LUTHERANS FOR LIFE

Next Chapter Meeting is at 2:00 PM Sunday, **October 13, 2019**, Mt. Calvary Lutheran Church, Wamego, KS.

What an opportunity to hear two professionals speak! Plus, learn what we are working on!

- **District 51 State Representative Ron Highland** will talk about the history of Kansas abortion laws and what could be happening in the 2020 legislature session.
- **Deaconess Rachel Geraci, National Lutherans for Life Mission & Ministry Director**, will speak about what National LFL has available to help our chapter.

Reminder: To vote you need to join National LFL. Be sure to add Flint Hills LFL and #257. 20% of your membership donation comes back to Flint Hills LFL.

ST. LUKE'S INTERNATIONAL STUDENT MINISTRY

For more than 25 years St. Luke's has been part of the International Student Ministry in partnership with HIS (Helping International Students). For a number of recent years our ministry has been to KSU exchange students from the Czech Republic. Several universities in Prague exchange with KSU. Students share info about our ministry when they go home and incoming students seek information about how to participate.

Our program consists of two parts:

- 1) homestay where they are met at the airport and put up in our homes for 2-3 days and then helped check into campus housing, and
- 2) host family/American friend where our St. Luke's families are like Mom and Dad away from home for the duration of their stay. In most cases the same family provides both parts of the program.

This year there are 10 families participating and 10 students. All the students are from the University of Czech Tech in Prague. St. Luke's participated in the HIS welcome dinner helping provide food and workers. All the families gathered for a get acquainted picnic in September and families and students plan to attend the Fall Festival where they hope to fish and experience a hayrack ride for the first time.

If you are interested in becoming a host family contact St. Luke's Program Facilitator Liz Beikmann (dogwood.angus@gmail.com).



Czech/ Slovak exchange students at September picnic with host families.

Join us as we share in a day to celebrate and remember pregnancies and babies gone too soon.



This is a community wide event on Sunday, October 13, at the Blue Earth Plaza in Manhattan.

All are welcome to attend.

The Remembrance Ceremony is a free event that includes a bubble and butterfly release.

The Remembrance Day 5K Run/Walk and Kid's Fun Run will follow the ceremony.

This event raises awareness and offers support to families and individuals who have experienced pregnancy or infant loss.

To register for the race, purchase a t-shirt, reserve a remembrance butterfly or for more information, please visit: <http://register.chronotrack.com/r/52735>

This event is brought to you by Perinatal Bereavement MHK and The Mercy Community Health Foundation.

For questions, please email:

PerinatalBereavementMHK@gmail.com

Find Us on Facebook: "Perinatal Bereavement MHK"

TRAVELING BULLETIN

Lutheran Summer Music Academy and Festival, Valparaiso, IN, Barbara Hackbart

Central United Methodist, Kansas City, MO, Larry and Alice Wesche

St. John's Missionary Baptist, Salina, KS, Jamie Spikes

Ascension Lutheran, Wichita, KS, Larry and Alice Wesche

Messiah Lutheran, Emporia, KS, Steve & Gayle Heitman

Trinity Lutheran, Salina, KS, Ken Culbertson

Zion Lutheran, Sebeka, MN, Pearl Caponera

(When you worship at another church, please bring the worship folder and bulletin to the church office with your name on. We will post your name and where you've worshipped, hopefully stimulating conversation of where you've visited. And, our staff will get the chance to see what other churches are doing. Thanks!)

FROM THE PARISH NURSE



1 in 8 women will be diagnosed with breast cancer this year. Early detection is key to early treatment.

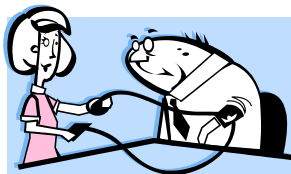
Have you had your mammogram and clinical breast exam?

Call your physician for an appointment.



HAVE YOU GOTTEN YOUR 2 CLEANINGS IN THIS YEAR?
MAKE AN APPOINTMENT TODAY!

Your Parish Nurses:
Jamie, Kate & Heidi



MENTAL HEALTH AWARENESS MONTH



NATIONAL DEPRESSION AND MENTAL HEALTH SCREENING MONTH

Depression is more common than AIDs, Cancer and Diabetes combined. Each year, millions of Americans face the reality of living with a mental health condition, as **1 in 5 U.S. adults will experience a mental health condition in their lifetime**. However, *everyone* is affected or impacted by mental illness through friends and family. Screening programs provide help and referral information.

Not all wounds are physical. Depression, PTSD and related mood disorders can not be seen on an x-ray. Yet mental illness is just as painful. **The stigma associated with the disease often prevents many from seeking help and getting treated.**

For help in our community contact Pawnee Mental Health Services at 785-587-4300, 785-587-4315, 785-587-4361 or visit www.pawnee.org Also, information about mental illness and support can be found at www.nami.org.

Do You Have a Prescription Drug Plan ?



Open enrollment is fast approaching. Those who are on Medicare and have a prescription drug plan can check for changes in the plans or change to a new plan. **Contact the Flint Hills Area Agency on Aging** for assistance or go to www.medicare.gov.



FALL PREVENTION

Every year, millions of adults in the U.S. aged 65 and older fall (CDC, 2015). Falls in older adults can cause moderate to severe injuries including hip fractures and head trauma potentially increasing the risk for early death. More than 217,000 die each year due to unintentional falls. Fortunately, **falls are preventable**. According to the CDC, there are **four primary areas to address when preventing falls**: medication management, home safety assessment, exercise, which includes balancing components, and a yearly vision screening. For more ways to prevent falls, visit www.cdc.gov/STEADI